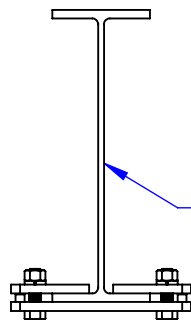
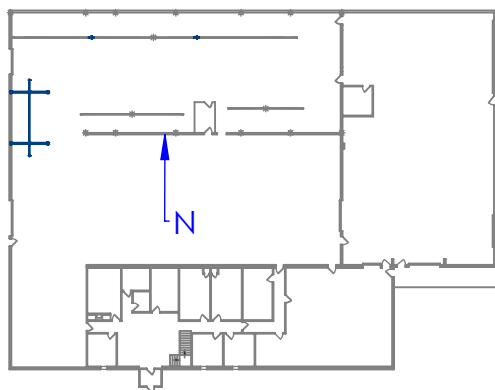


Crane Weight Capacities			
Bubble #	Crane Location	Heaviest Product	Maximum Wt.
1	HB Rear Assy.	HB-"55" Series	400
2	HB Marriage	HB-555 Frame + Floor w/o Headache Rack	1200
3	HB Floor	HB-555 Floor	800
4	HB Main Frame	HB-555 Frame	400
5	ProSpear/Apex	PS-555 w/o Headache Rack	1300
6	ProSpear/Apex	PS-555 w/o Headache Rack	1300



WIDE FLANGE BEAM  
12 x 4- 22 LBS PER FT



**PROPRIETARY AND CONFIDENTIAL**  
THE INFORMATION CONTAINED IN THIS  
DRAWING IS THE SOLE PROPERTY OF TRIPLE  
C INC. ANY REPRODUCTION IN PART OR  
AS A WHOLE WITHOUT THE WRITTEN  
PERMISSION OF TRIPLE C INC. IS PROHIBITED.

DIMENSIONS ARE IN INCHES  
TOLERANCES:  
FRACTIONAL  $\pm 1/16$   
ANGULAR: MACH  $\pm 1$  BEND  $\pm$   
TWO PLACE DECIMAL  $\pm 010$   
THREE PLACE DECIMAL  $\pm 005$

MATERIAL ---  
DO NOT SCALE DRAWING

NAME	DATE
DRAWN <b>HEATH</b>	7/18/2012
PART # <b>CRANE BEAM</b>	
ASM # <b>LOCATION</b>	
COMMENTS:	
CRANE LIFT LOCATION	

P.O. BOX 248,  
SABETHA, KS 66534

**TRIPLE C**  
INC.

SIZE	DWG. NO.	REV.
<b>A</b>	<b>95-1404</b>	<b>A</b>
SCALE: 1:190	WEIGHT: ---	SHEET 1 OF 1